

Anti-MELTF(CD228) hIgG1 Antibody(SC57.32)

Product Information

GM-78815AB-10	10 µg
GM-78815AB-100	100 µg
GM-78815AB-1000	1 mg

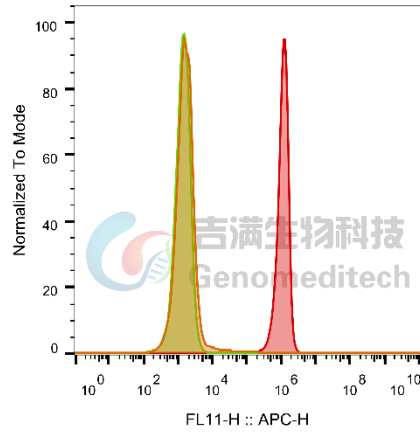
Antibody Information

Species Reactivity	Human
Clone	SC57.32
Source/Isotype	Monoclonal human IgG1, κ
Application	Flow cytometry
Specificity	Detects MELTF.
Gene	MELTF(CD228)
Other Names	MAP97, MFI2, MTF1, MTF
Gene ID	4241 (human)
Background	Melanotransferrin is a protein that in humans is encoded by the MELTF gene. MELTF has also recently been designated CD228 (cluster of differentiation 228). The protein encoded by this gene is a cell-surface glycoprotein found on melanoma cells. The protein shares sequence similarity and iron-binding properties with members of the transferrin superfamily. The importance of the iron binding function has not yet been identified. This gene resides in the same region of chromosome 3 as members of the transferrin superfamily. Alternative splicing results in two transcript variants. It is part of neural crest tissue, often present in melanotic neuroectodermal tumor of infancy.
Storage	Store at 2-8°C short term (1-2 weeks).Store at ≤ -20°C long term. Avoid repeated freeze-thaw.
Formulation	Phosphate-buffered solution, pH 7.2-7.4.

Data Examples

Flow cytometry

Cynomolgus_MELTF(CD228) CHO-K1 Cell Line (Catalog # GM-C40675)
 was stained with Anti-MELTF(CD228) hIgG1 Antibody(SC57.32) (Catalog
 # GM-78815AB) or isotype control antibody, followed by anti-Human IgG
 APC-conjugated Secondary Antibody .



SampleID	Geometric Mean : FL11-H
CHO-K1 anti-CD228+APC-2nd Ab	1673
CHO-K1 Cyno_MELTF(CD228) H_IgG+APC-2nd Ab	1380
CHO-K1 Cyno_MELTF(CD228) anti-CD228+APC-2nd Ab	9.86E5

Fig. FACS